

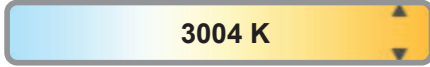
Light efficiency:



Light quality:



Color temperature:



Output: 1139 lm

Peak: 2833 cd

Power: 18.5 W

PF: 0.90



Product name:

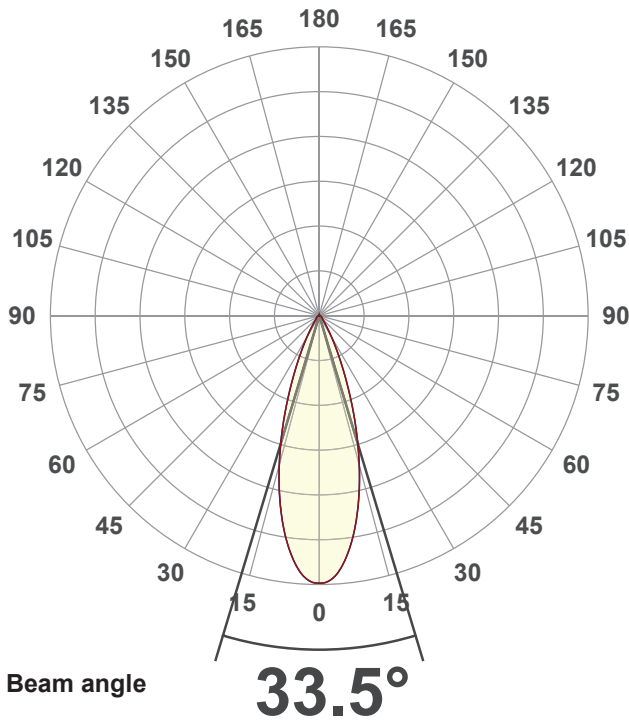
**SORAA VIVID PAR30S**

Item number:

**SP30SW-18-36D-930-03-S3**

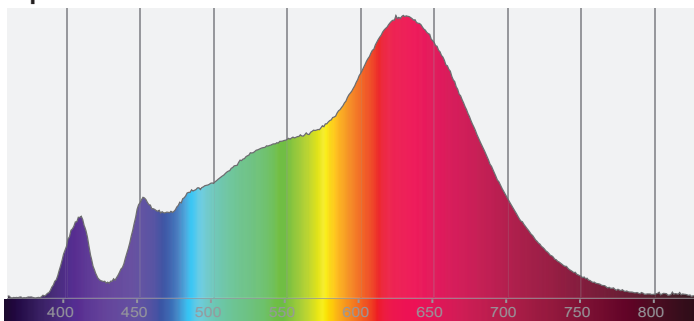
Date and time:

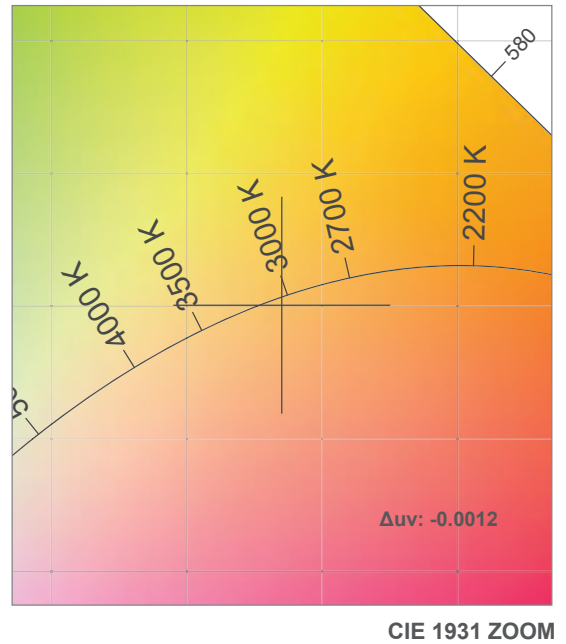
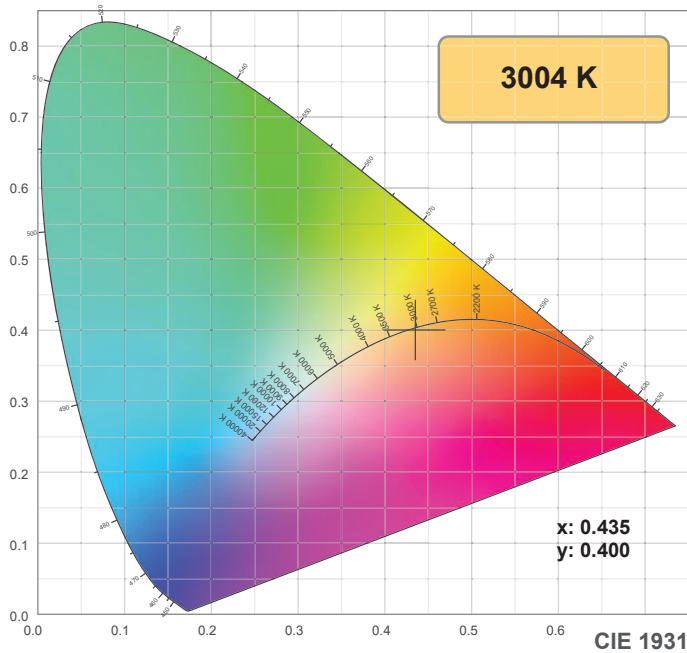
**5/4/2021 4:00:13 PM**



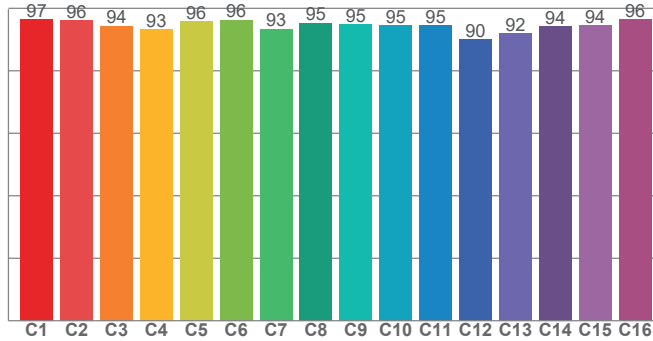
CIE 1931  
x: 0.435  
y: 0.400

Spectra

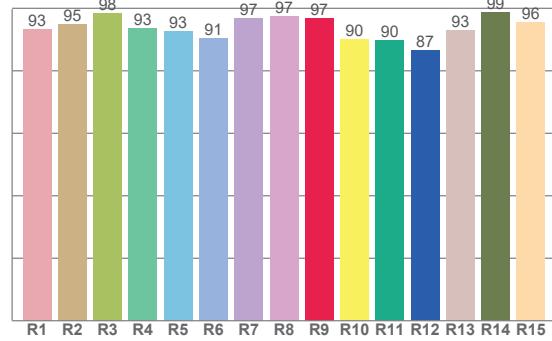




TM30: 94.8



CRI: 94.7 (R1-R8)



CRI R values, only R1-R8 are used to calculate final CRI value

R1	R2	R3	R4	R5	R6	R7	R8	R9	R10	R11	R12	R13	R14	R15
93.2	94.9	98.3	93.5	92.7	90.5	96.7	97.4	96.8	90.1	89.7	86.7	92.9	98.8	95.6

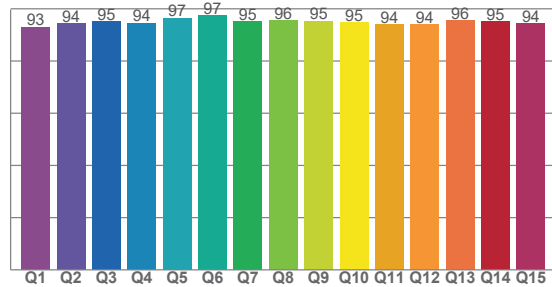
TM30 C values, 16 binned values out of total of 99 C values

C1	C2	C3	C4	C5	C6	C7	C8	C9	C10	C11	C12	C13	C14	C15	C16
96.6	96.2	94.4	93.3	95.9	96.3	93.4	95.3	94.8	94.6	94.6	90.1	91.9	94.2	94.4	96.4

CQS Q values

Q1	Q2	Q3	Q4	Q5	Q6	Q7	Q8	Q9	Q10	Q11	Q12	Q13	Q14	Q15
93.0	94.3	95.2	94.5	96.5	97.3	95.2	95.6	95.3	94.7	93.9	93.9	95.5	95.1	94.4

CQS: 94.8



Color parameters

Color temperature	Color rendering index	Red component	Color fidelity	Color gamut	Color quality scale	Color coordinate cie 1931	Color coordinate cie 1931	Color coordinate	Color coordinate	Color deviation from black body
CCT	CRI	CRI R9	TM30 Rf	TM30 Rg	CQS	x	y	u	v	Δuv
3004 K	94.7	96.8	94.8	99.9	94.8	0.435	0.400	0.251	0.346	-0.0012

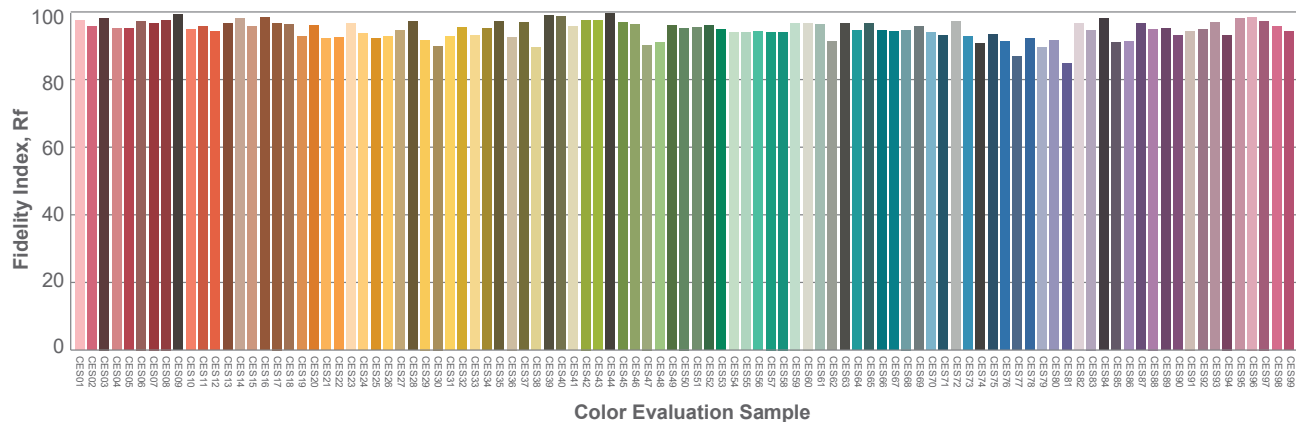
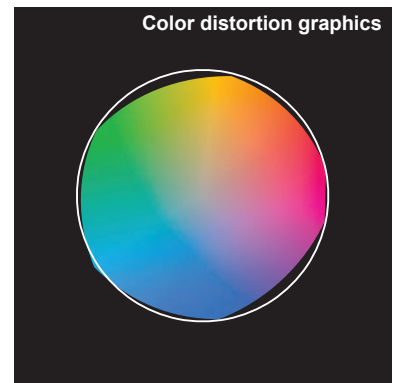
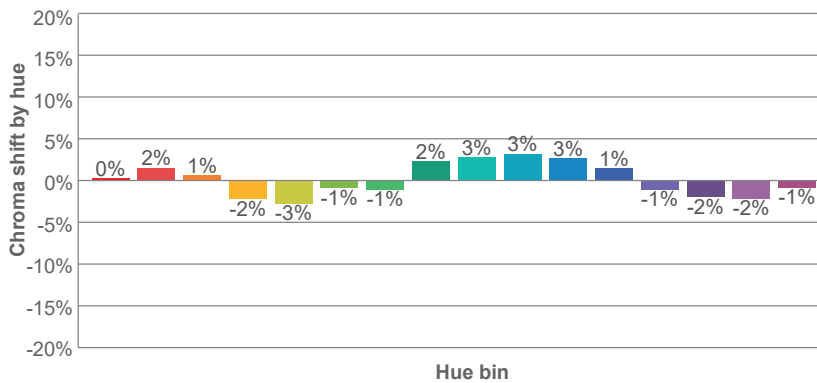
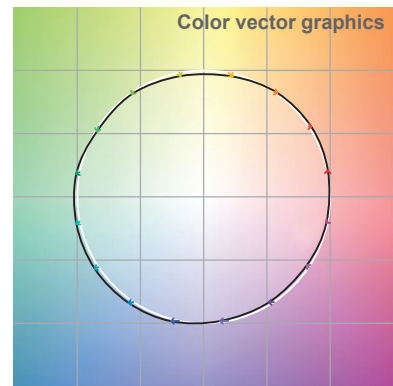
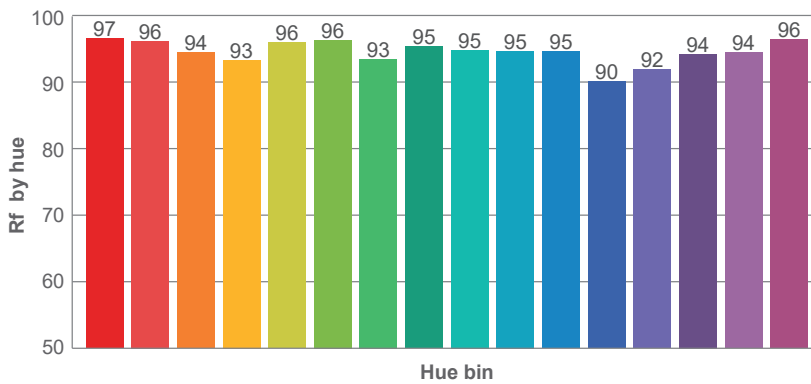
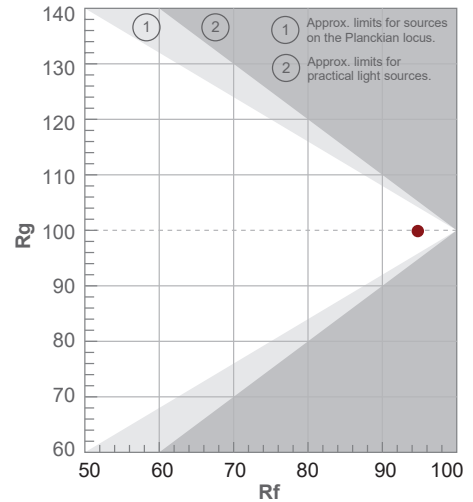
**Rf 94.8**

Fidelity index Rf

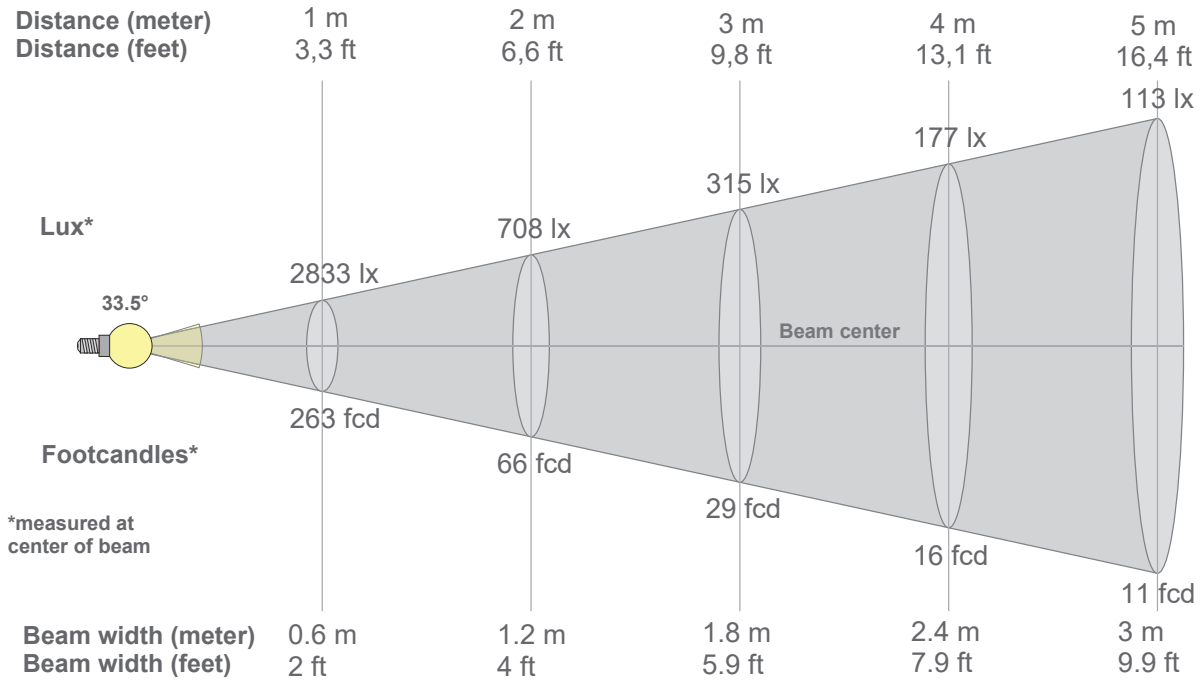
**Rg 99.9**

Gammut index Rg

Hue Bin	R <sub>f</sub>	Graphic shifts (%)	
		Chroma	Hue
1	97	0%	1%
2	96	2%	-1%
3	94	1%	-3%
4	93	-2%	-4%
5	96	-3%	-1%
6	96	-1%	2%
7	93	-1%	4%
8	95	2%	2%
9	95	3%	1%
10	95	3%	-1%
11	95	3%	-3%
12	90	1%	-6%
13	92	-1%	-6%
14	94	-2%	-4%
15	94	-2%	0%
16	96	-1%	-1%



Beam details



Beam intensities from 1-20m

1m	2m	3m	4m	5m	6m	7m	8m	9m	10m	11m	12m	13m	14m	15m	16m	17m	18m	19m	20m
3.3ft	6.6ft	9.8ft	13.1ft	16.4ft	19.7ft	23ft	26.2ft	29.5ft	32.8ft	36.1ft	39.4ft	42.7ft	45.9ft	49.2ft	52.5ft	55.8ft	59.1ft	62.3ft	65.6ft
2833lx	708lx	315lx	177lx	113lx	79lx	58lx	44lx	35lx	28lx	23lx	20lx	17lx	14lx	13lx	11lx	10lx	9lx	8lx	7lx
263.2fcd	65.8fcd	29.2fcd	16.4fcd	10.5fcd	7.3fcd	5.4fcd	4.1fcd	3.2fcd	2.6fcd	2.2fcd	1.8fcd	1.6fcd	1.3fcd	1.2fcd	1fcd	0.9fcd	0.8fcd	0.7fcd	0.7fcd

Intensities in 0° c-plane

0°	2°	4°	6°	8°	10°	12°	14°	16°	18°	20°	22°	24°	26°	28°	30°	32°	34°	36°	38°
2833	2813	2739	2604	2434	2230	2004	1763	1511	1263	1025	805	619	469	349	259	190	142	108	85
100%	99%	97%	92%	86%	79%	71%	62%	53%	45%	36%	28%	22%	17%	12%	9%	7%	5%	4%	3%

Intensities in 90° c-plane

0°	2°	4°	6°	8°	10°	12°	14°	16°	18°	20°	22°	24°	26°	28°	30°	32°	34°	36°	38°
2833	2813	2739	2604	2434	2230	2004	1763	1511	1263	1025	805	619	469	349	259	190	142	108	85
100%	99%	97%	92%	86%	79%	71%	62%	53%	45%	36%	28%	22%	17%	12%	9%	7%	5%	4%	3%

Intensities in 180° c-plane

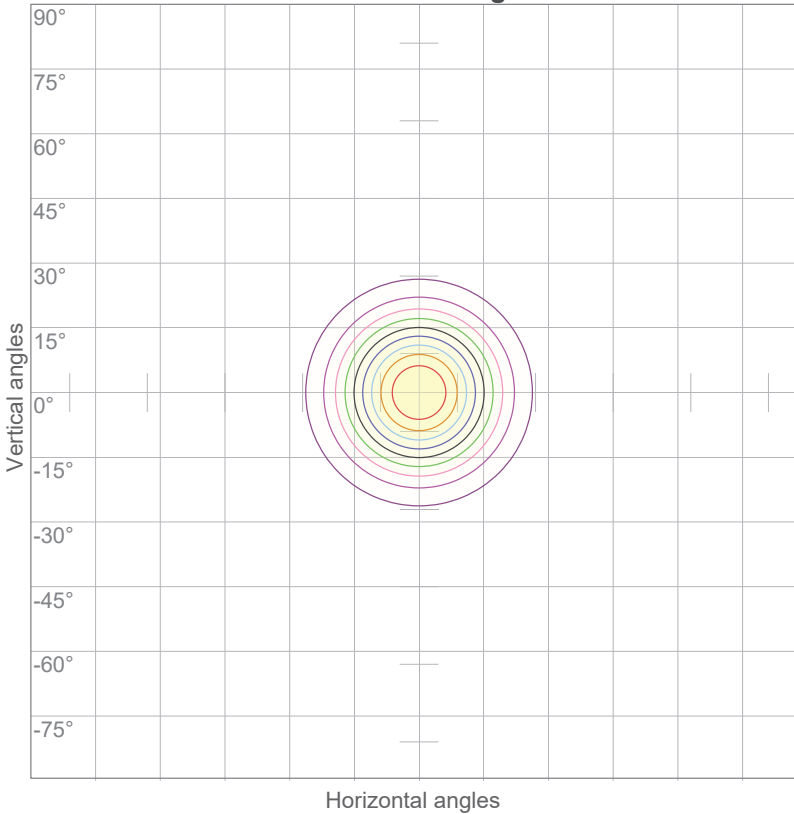
0°	2°	4°	6°	8°	10°	12°	14°	16°	18°	20°	22°	24°	26°	28°	30°	32°	34°	36°	38°
2833	2813	2739	2604	2434	2230	2004	1763	1511	1263	1025	805	619	469	349	259	190	142	108	85
100%	99%	97%	92%	86%	79%	71%	62%	53%	45%	36%	28%	22%	17%	12%	9%	7%	5%	4%	3%

Intensities in 270° c-plane

0°	2°	4°	6°	8°	10°	12°	14°	16°	18°	20°	22°	24°	26°	28°	30°	32°	34°	36°	38°
2833	2813	2739	2604	2434	2230	2004	1763	1511	1263	1025	805	619	469	349	259	190	142	108	85
100%	99%	97%	92%	86%	79%	71%	62%	53%	45%	36%	28%	22%	17%	12%	9%	7%	5%	4%	3%

Beam angle 50%	Field angle 10%	Cutoff angle 2,5%	Intensity ratio in 120° cone	Intensity ratio in 90° cone
33.5°	58.8°	79.6°	96.0%	91.7%

ISO candela diagram



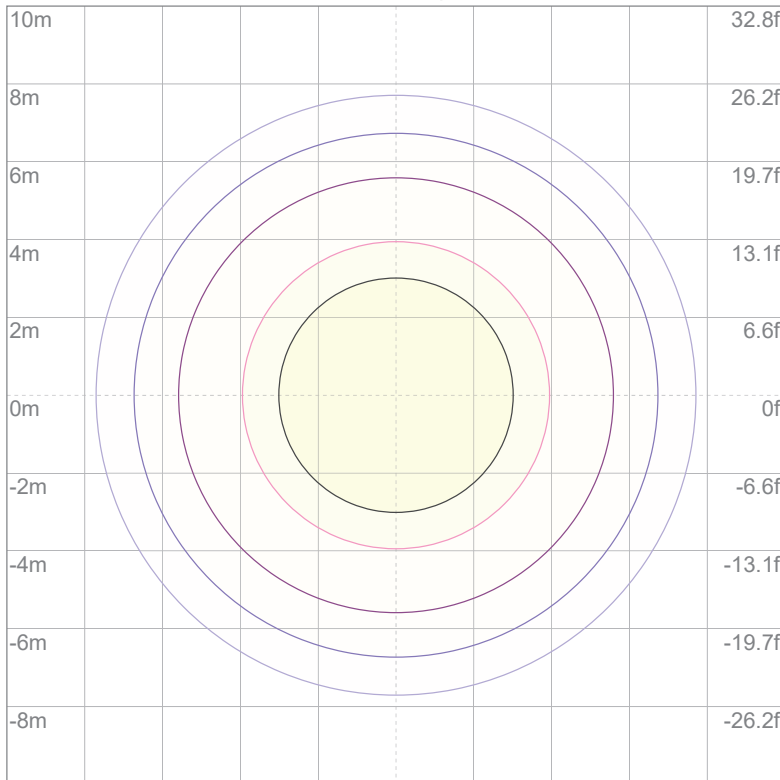
10%	283 cd
20%	567 cd
30%	850 cd
40%	1133 cd
50%	1416 cd
60%	1700 cd
70%	1983 cd
80%	2266 cd
90%	2549 cd

Conditions:

Number of c-planes: 16

Candela at center: 2833 cd

ISO lux diagram



3%	0.850 lx
5%	1.42 lx
10%	2.83 lx
30%	8.50 lx
50%	14.2 lx

Conditions:

Number of c-planes: 16

Lux at center: 28.3 lx

*Lux distribution on a surface when lamp is mounted at 10 meters from the surface.*