

Light efficiency:

64 Lumen/Watt

Light quality:

CRI: 94.9

Color temperature:

3018 K

Output: 1198 lm

Peak: 5194 cd

Power: 18.6 W

PF: 0.90



Product name:

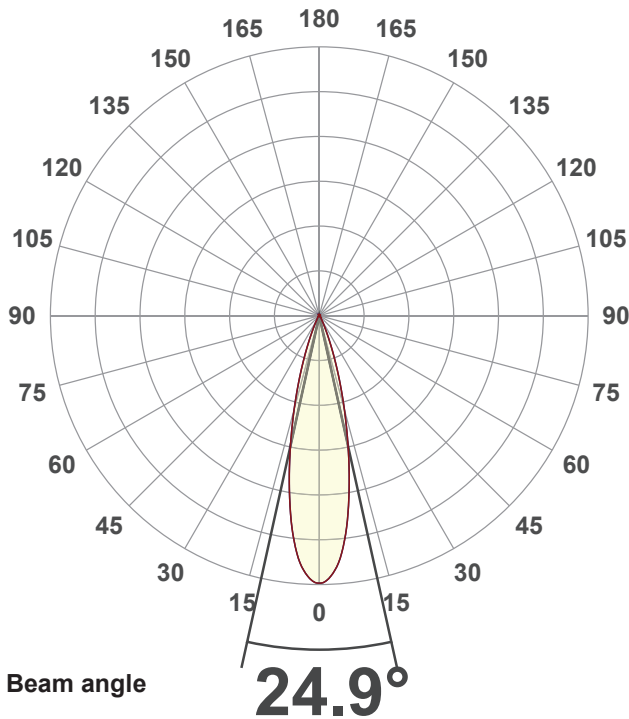
SORAA VIVID PAR30S

Item number:

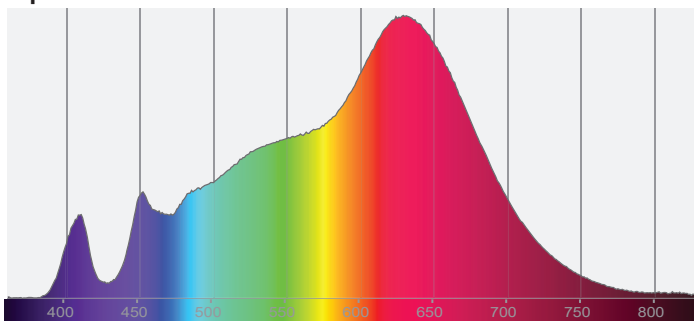
SP30SW-18-25D-930-03-S3

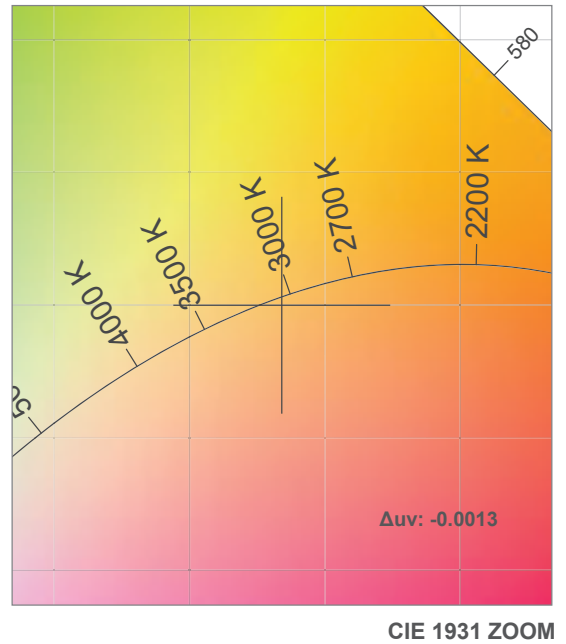
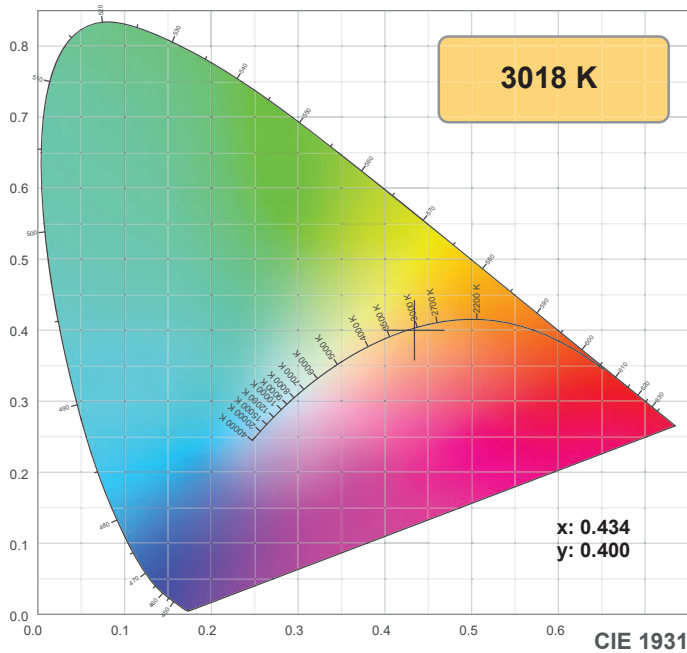
Date and time:

5/4/2021 4:32:39 PM

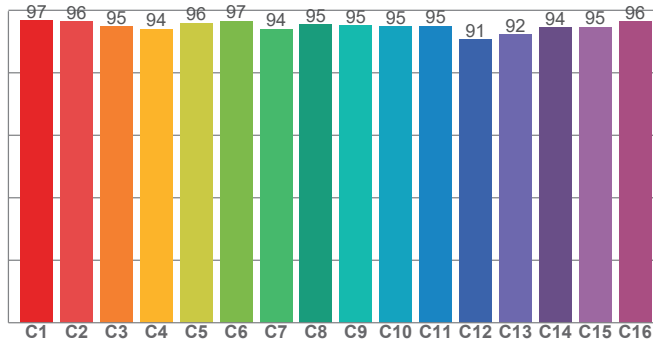


Spectra

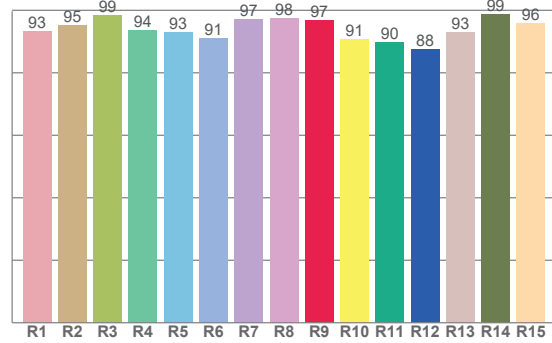




TM30: 95.1



CRI: 94.9 (R1-R8)



CRI R values, only R1-R8 are used to calculate final CRI value

R1	R2	R3	R4	R5	R6	R7	R8	R9	R10	R11	R12	R13	R14	R15
93.3	95.1	98.6	93.5	92.9	90.9	97.1	97.6	97.0	90.7	89.7	87.5	93.1	98.7	95.7

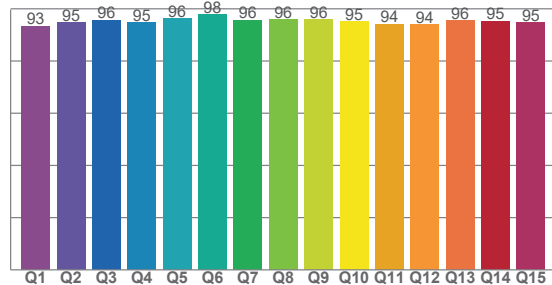
TM30 C values, 16 binned values out of total of 99 C values

C1	C2	C3	C4	C5	C6	C7	C8	C9	C10	C11	C12	C13	C14	C15	C16
96.7	96.3	94.8	94.1	95.9	96.6	94.1	95.5	95.1	94.9	95.0	90.7	92.3	94.5	94.7	96.5

CQS Q values

Q1	Q2	Q3	Q4	Q5	Q6	Q7	Q8	Q9	Q10	Q11	Q12	Q13	Q14	Q15
93.4	94.7	95.7	94.7	96.3	97.8	95.7	95.9	95.8	95.2	94.2	94.1	95.6	95.2	94.7

CQS: 95.1



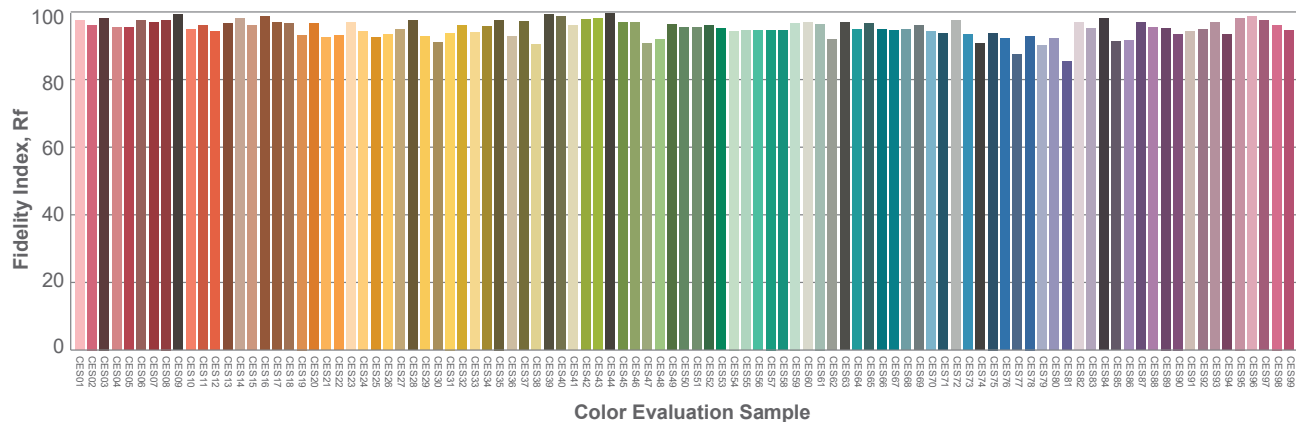
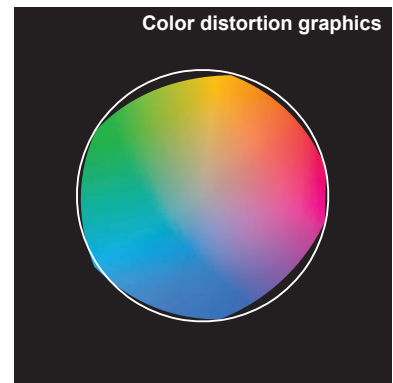
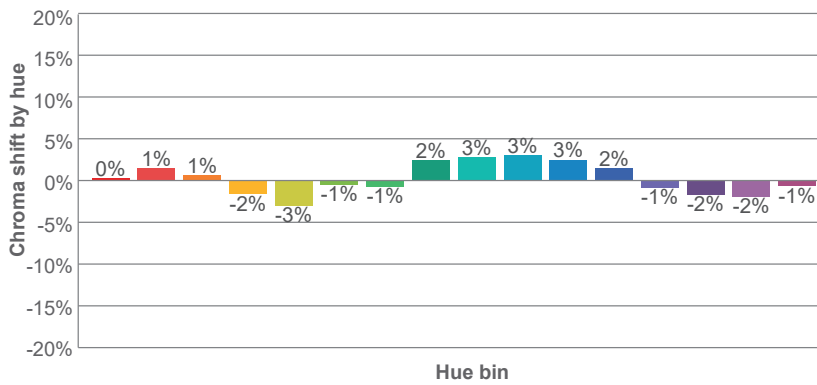
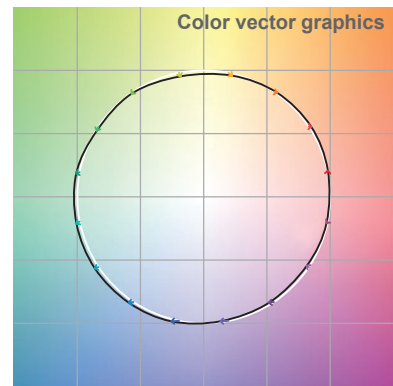
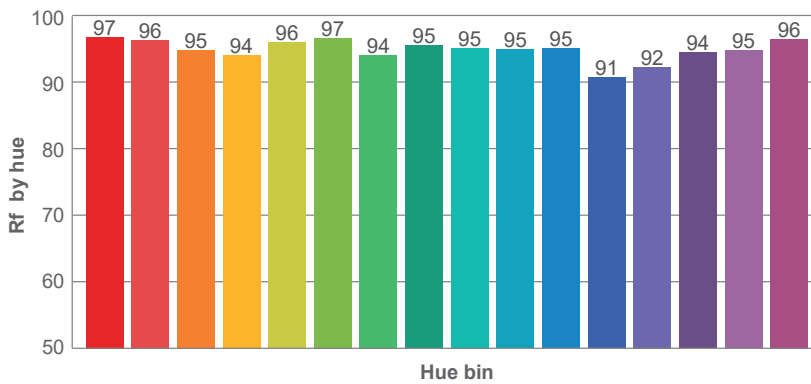
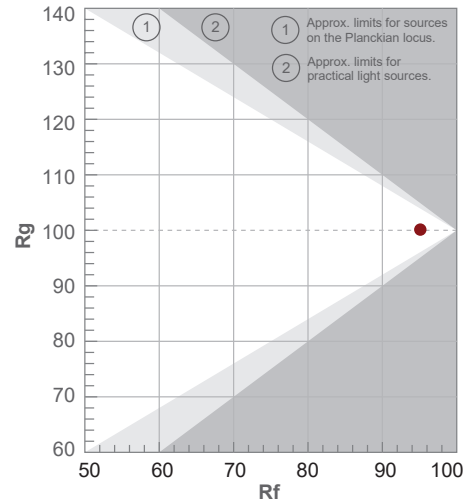
Color parameters

Color temperature	Color rendering index	Red component	Color fidelity	Color gamut	Color quality scale	Color coordinate cie 1931	Color coordinate cie 1931	Color coordinate	Color coordinate	Color deviation from black body
CCT	CRI	CRI R9	TM30 Rf	TM30 Rg	CQS	x	y	u	v	Δuv
3018 K	94.9	97.0	95.1	100.1	95.1	0.434	0.400	0.251	0.346	-0.0013

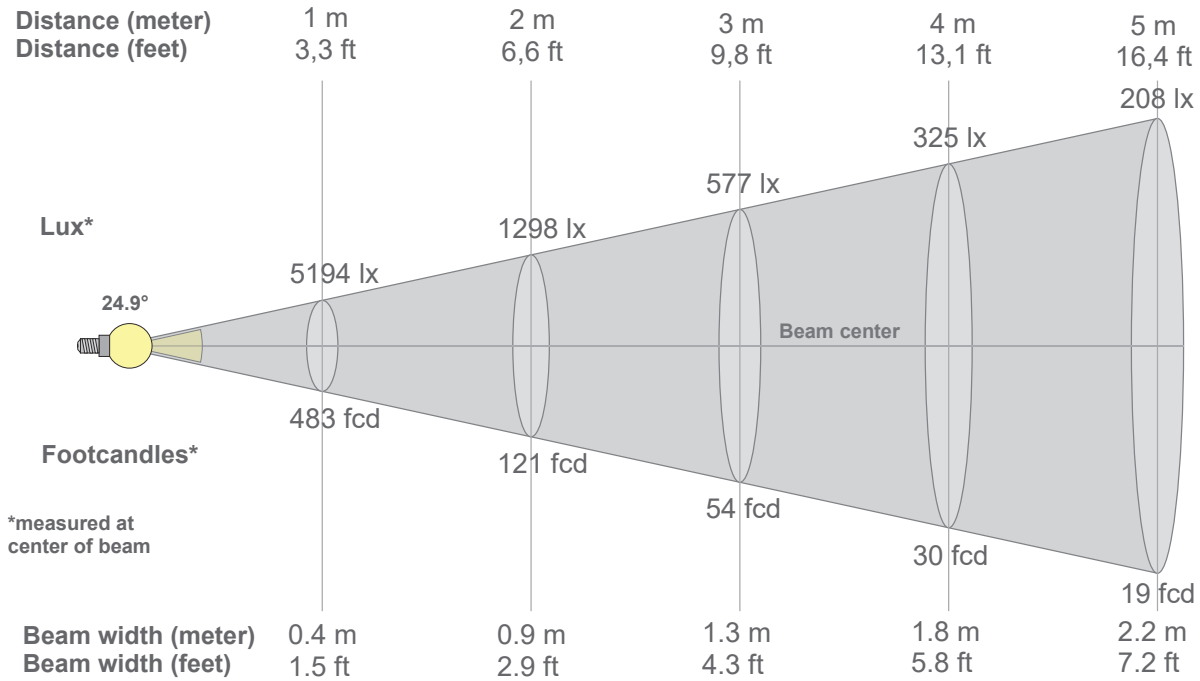
Rf 95.1
Fidelity index Rf

Rg 100.1
Gammut index Rg

Hue Bin	R _f	Graphic shifts (%)	
		Chroma	Hue
1	97	0%	1%
2	96	1%	-1%
3	95	1%	-2%
4	94	-2%	-3%
5	96	-3%	-1%
6	97	-1%	2%
7	94	-1%	4%
8	95	2%	2%
9	95	3%	1%
10	95	3%	-1%
11	95	3%	-3%
12	91	2%	-6%
13	92	-1%	-6%
14	94	-2%	-4%
15	95	-2%	0%
16	96	-1%	-1%



Beam details



Beam intensities from 1-20m

1m	2m	3m	4m	5m	6m	7m	8m	9m	10m	11m	12m	13m	14m	15m	16m	17m	18m	19m	20m
3.3ft	6.6ft	9.8ft	13.1ft	16.4ft	19.7ft	23ft	26.2ft	29.5ft	32.8ft	36.1ft	39.4ft	42.7ft	45.9ft	49.2ft	52.5ft	55.8ft	59.1ft	62.3ft	65.6ft
5194lx	1298lx	577lx	325lx	208lx	144lx	106lx	81lx	64lx	52lx	43lx	36lx	31lx	26lx	23lx	20lx	18lx	16lx	14lx	13lx
482.5fcd	120.6fcd	53.6fcd	30.2fcd	19.3fcd	13.4fcd	9.8fcd	7.5fcd	6fcd	4.8fcd	4fcd	3.4fcd	2.9fcd	2.5fcd	2.1fcd	1.9fcd	1.7fcd	1.5fcd	1.3fcd	1.2fcd

Intensities in 0° c-plane

0°	2°	4°	6°	8°	10°	12°	14°	16°	18°	20°	22°	24°	26°	28°	30°	32°	34°	36°	38°
5194	5114	4885	4492	3962	3351	2735	2154	1633	1187	819	538	347	225	153	111	84	67	58	52
100%	98%	94%	86%	76%	65%	53%	41%	31%	23%	16%	10%	7%	4%	3%	2%	2%	1%	1%	1%

Intensities in 90° c-plane

0°	2°	4°	6°	8°	10°	12°	14°	16°	18°	20°	22°	24°	26°	28°	30°	32°	34°	36°	38°
5194	5114	4885	4492	3962	3351	2735	2154	1633	1187	819	538	347	225	153	111	84	67	58	52
100%	98%	94%	86%	76%	65%	53%	41%	31%	23%	16%	10%	7%	4%	3%	2%	2%	1%	1%	1%

Intensities in 180° c-plane

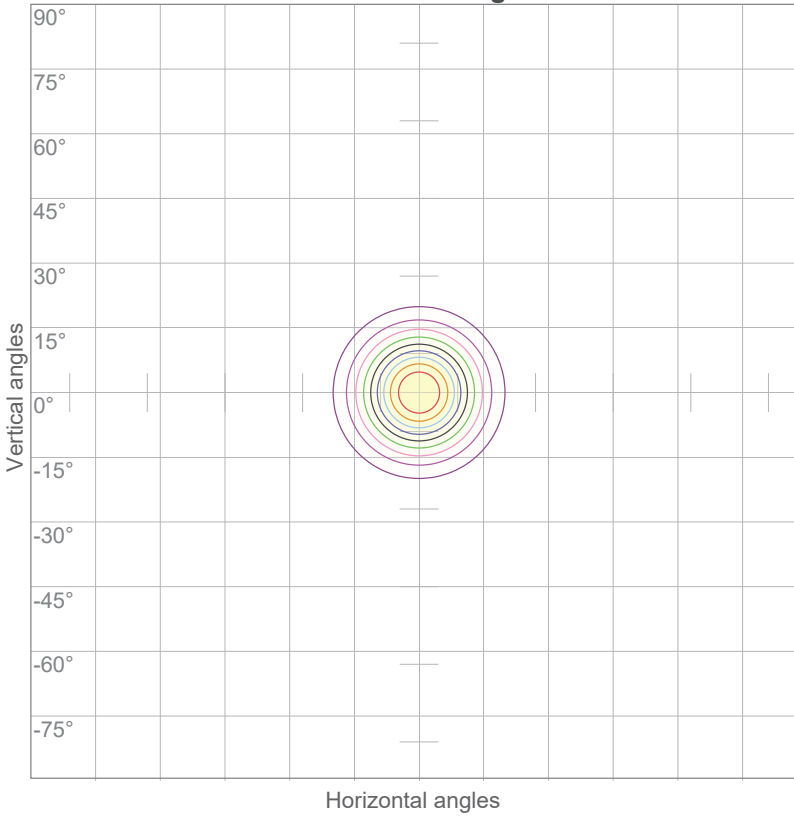
0°	2°	4°	6°	8°	10°	12°	14°	16°	18°	20°	22°	24°	26°	28°	30°	32°	34°	36°	38°
5194	5114	4885	4492	3962	3351	2735	2154	1633	1187	819	538	347	225	153	111	84	67	58	52
100%	98%	94%	86%	76%	65%	53%	41%	31%	23%	16%	10%	7%	4%	3%	2%	2%	1%	1%	1%

Intensities in 270° c-plane

0°	2°	4°	6°	8°	10°	12°	14°	16°	18°	20°	22°	24°	26°	28°	30°	32°	34°	36°	38°
5194	5114	4885	4492	3962	3351	2735	2154	1633	1187	819	538	347	225	153	111	84	67	58	52
100%	98%	94%	86%	76%	65%	53%	41%	31%	23%	16%	10%	7%	4%	3%	2%	2%	1%	1%	1%

Beam angle 50%	Field angle 10%	Cutoff angle 2,5%	Intensity ratio in 120° cone	Intensity ratio in 90° cone
24.9°	44.3°	58°	97.4%	93.9%

ISO candela diagram

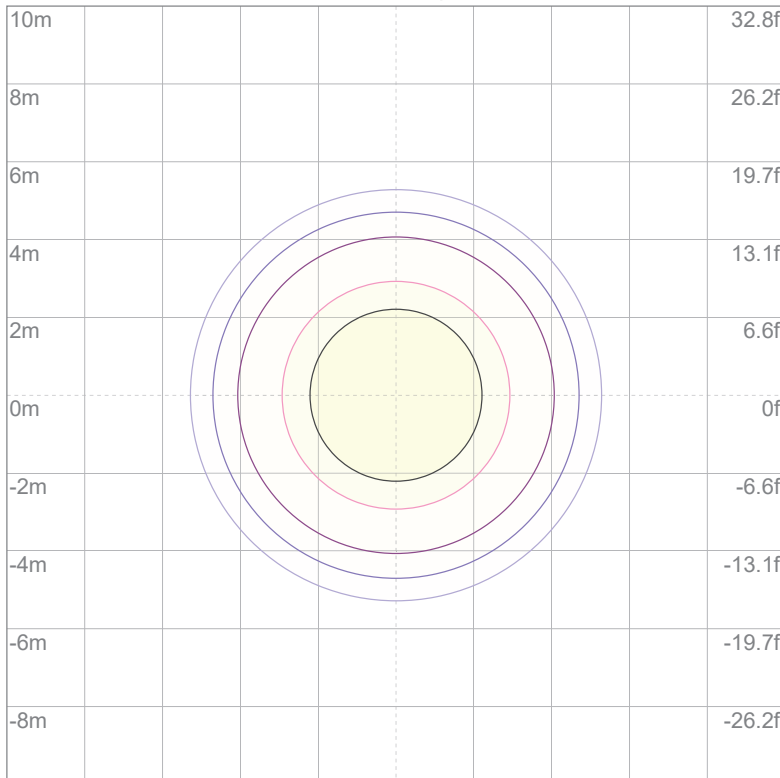


10%	519 cd
20%	1039 cd
30%	1558 cd
40%	2078 cd
50%	2597 cd
60%	3116 cd
70%	3636 cd
80%	4155 cd
90%	4674 cd

Conditions:

Number of c-planes: 16
Candela at center: 5194 cd

ISO lux diagram



3%	1.56 lx
5%	2.60 lx
10%	5.19 lx
30%	15.6 lx
50%	26.0 lx

Conditions:

Number of c-planes: 16
Lux at center: 51.9 lx

Lux distribution on a surface when lamp is mounted at 10 meters from the surface.