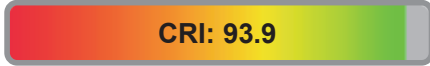


Light efficiency:



Light quality:



Color temperature:



Output: 1030 lm

Peak: 2608 cd

Power: 18.5 W

PF: 0.91



Product name:

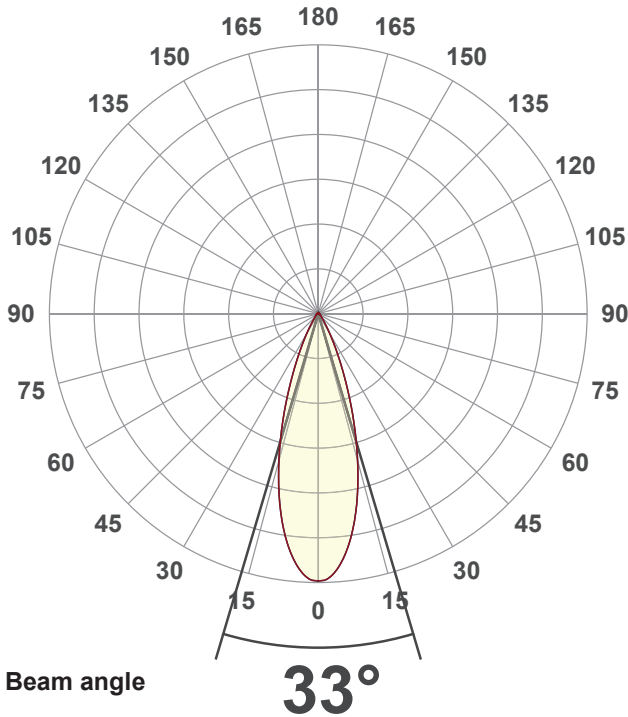
SORAA VIVID PAR30S

Item number:

SP30SW-18-36D-927-03-S3

Date and time:

5/4/2021 12:42:37 PM



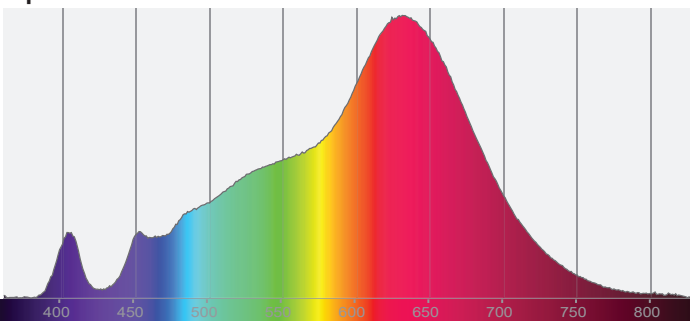
Beam angle

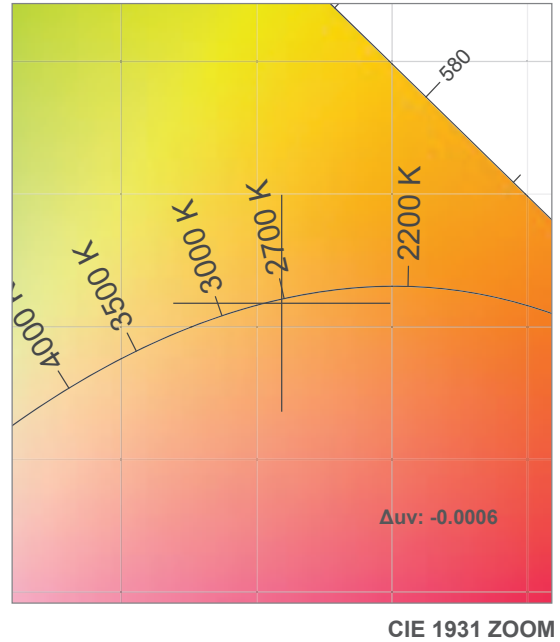
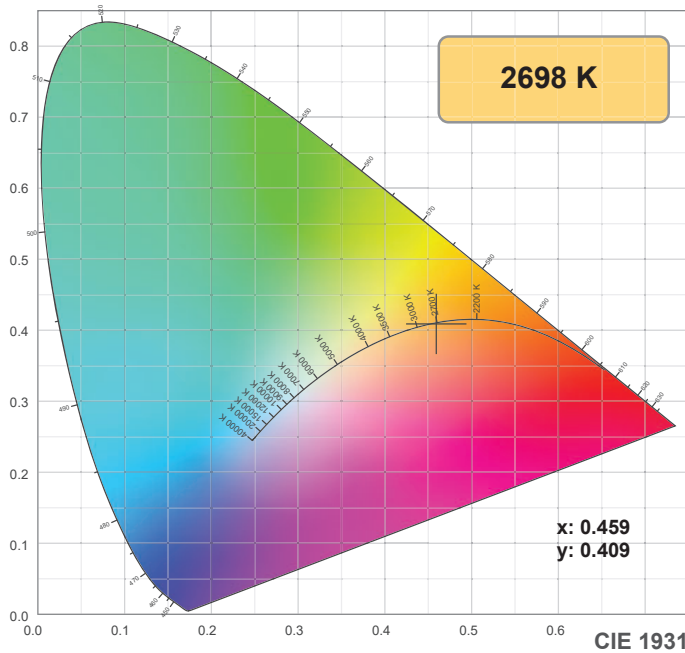
33°



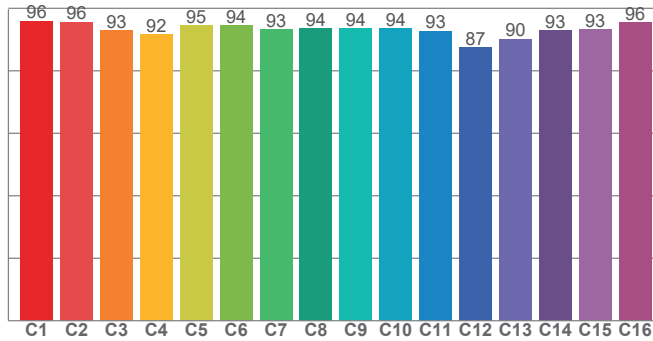
CIE 1931
x: 0.459
y: 0.409

Spectra

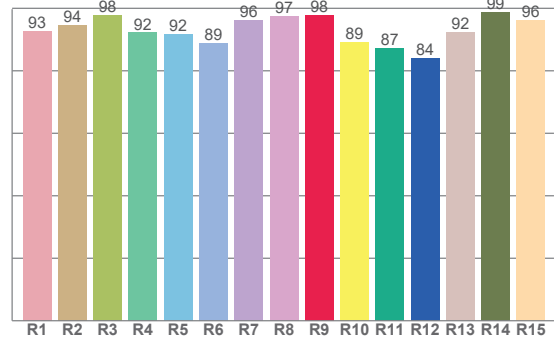




TM30: 93.5



CRI: 93.9 (R1-R8)



CRI R values, only R1-R8 are used to calculate final CRI value

R1	R2	R3	R4	R5	R6	R7	R8	R9	R10	R11	R12	R13	R14	R15
92.7	94.5	97.9	92.2	91.6	88.9	96.3	97.4	97.8	89.0	87.3	83.9	92.3	98.6	96.2

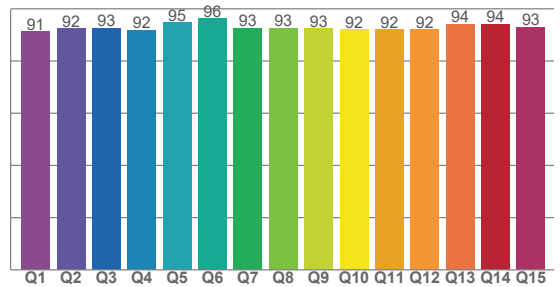
TM30 C values, 16 binned values out of total of 99 C values

C1	C2	C3	C4	C5	C6	C7	C8	C9	C10	C11	C12	C13	C14	C15	C16
96.0	95.7	92.9	91.7	94.6	94.5	93.2	93.7	93.6	93.6	92.8	87.4	90.2	93.0	93.2	95.5

CQS Q values

Q1	Q2	Q3	Q4	Q5	Q6	Q7	Q8	Q9	Q10	Q11	Q12	Q13	Q14	Q15
91.2	92.4	92.6	91.8	94.8	96.2	92.7	92.7	92.5	91.9	92.1	92.1	94.1	94.2	93.0

CQS: 92.8



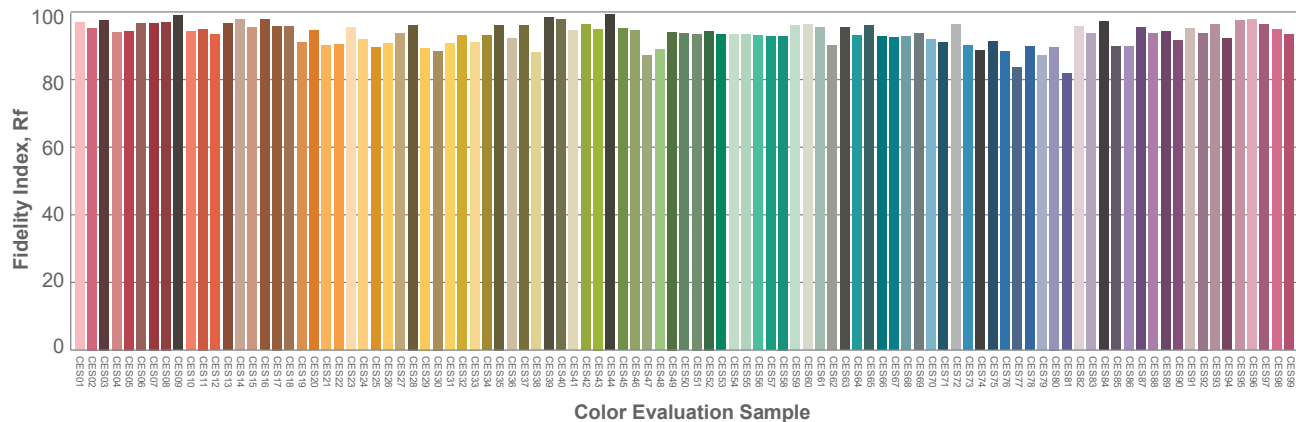
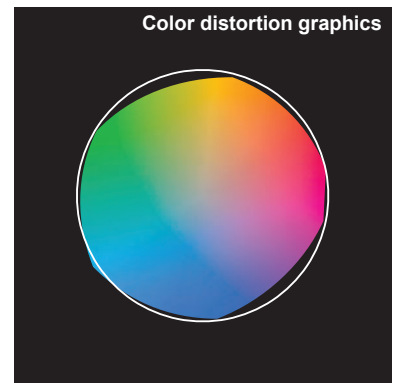
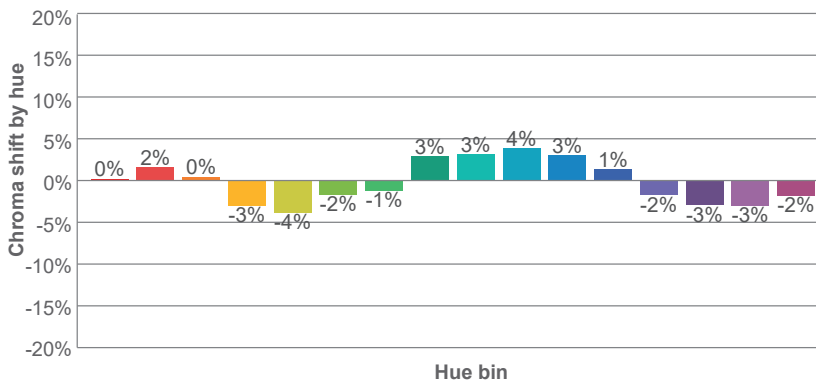
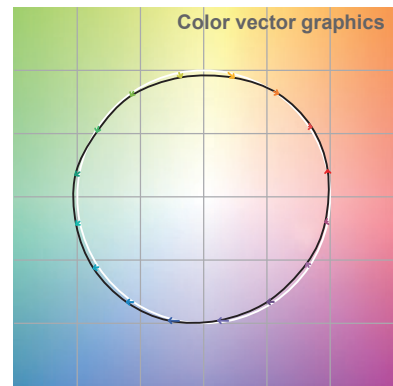
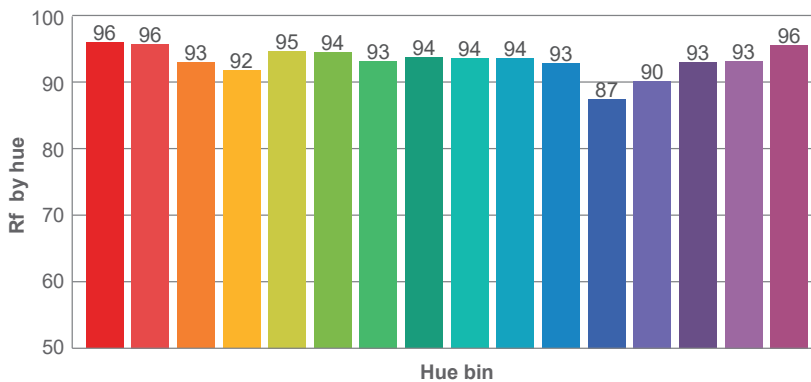
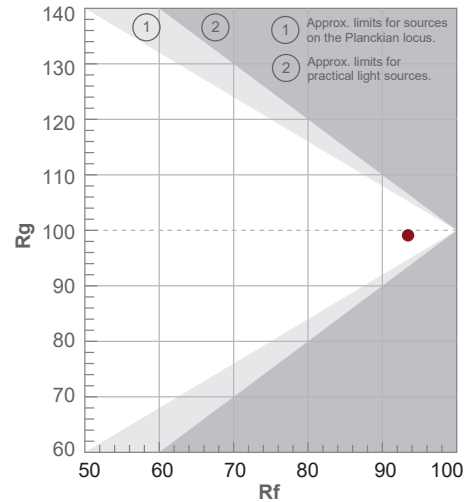
Color parameters

Color temperature	Color rendering index	Red component	Color fidelity	Color gamut	Color quality scale	Color coordinate cie 1931	Color coordinate cie 1931	Color coordinate	Color coordinate	Color deviation from black body
CCT	CRI	CRI R9	TM30 Rf	TM30 Rg	CQS	x	y	u	v	Δuv
2698 K	93.9	97.8	93.5	99.1	92.8	0.459	0.409	0.263	0.351	-0.0006

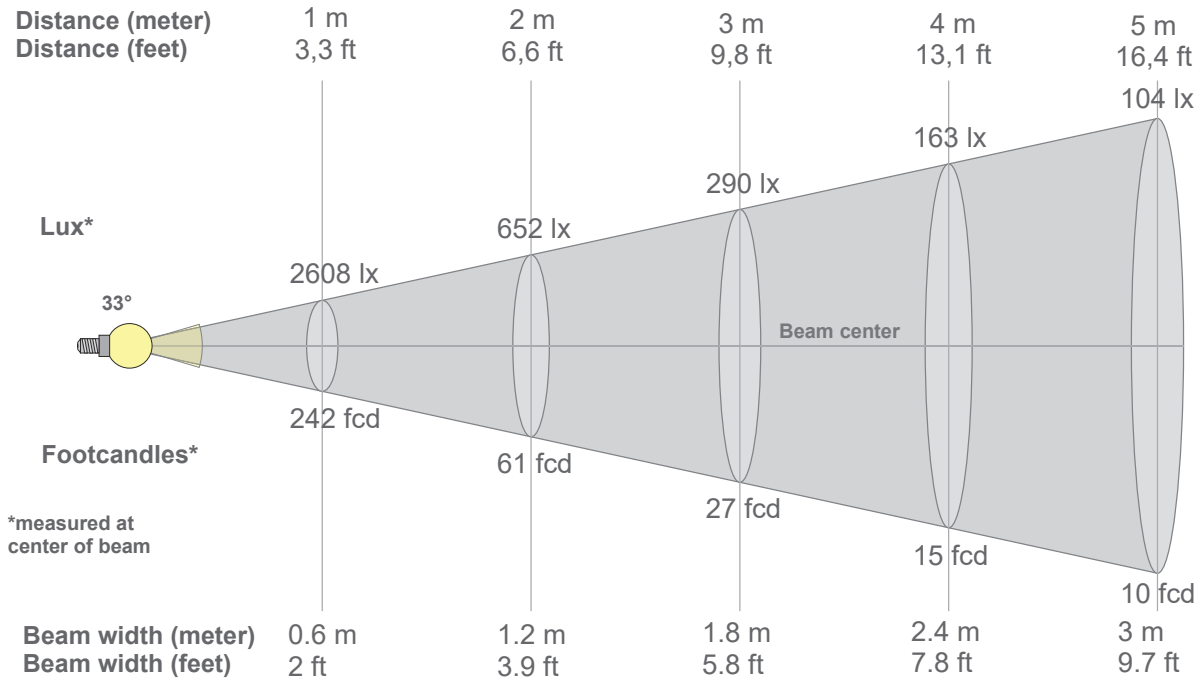
Rf 93.5
Fidelity index Rf

Rg 99.1
Gammut index Rg

Hue Bin	R _f	Graphic shifts (%)	
		Chroma	Hue
1	96	0%	1%
2	96	2%	-1%
3	93	0%	-4%
4	92	-3%	-5%
5	95	-4%	-1%
6	94	-2%	3%
7	93	-1%	4%
8	94	3%	3%
9	94	3%	2%
10	94	4%	-1%
11	93	3%	-4%
12	87	1%	-8%
13	90	-2%	-8%
14	93	-3%	-4%
15	93	-3%	2%
16	96	-2%	-1%



Beam details



Beam intensities from 1-20m

1m	2m	3m	4m	5m	6m	7m	8m	9m	10m	11m	12m	13m	14m	15m	16m	17m	18m	19m	20m
3.3ft	6.6ft	9.8ft	13.1ft	16.4ft	19.7ft	23ft	26.2ft	29.5ft	32.8ft	36.1ft	39.4ft	42.7ft	45.9ft	49.2ft	52.5ft	55.8ft	59.1ft	62.3ft	65.6ft
2608lx	652lx	290lx	163lx	104lx	72lx	53lx	41lx	32lx	26lx	22lx	18lx	15lx	13lx	12lx	10lx	9lx	8lx	7lx	7lx
242.3fcd	60.6fcd	26.9fcd	15.1fcd	9.7fcd	6.7fcd	4.9fcd	3.8fcd	3fcd	2.4fcd	2fcd	1.7fcd	1.4fcd	1.2fcd	1.1fcd	0.9fcd	0.8fcd	0.7fcd	0.7fcd	0.6fcd

Intensities in 0° c-plane

0°	2°	4°	6°	8°	10°	12°	14°	16°	18°	20°	22°	24°	26°	28°	30°	32°	34°	36°	38°
2608	2586	2509	2389	2231	2042	1830	1599	1365	1134	915	716	548	414	309	228	169	127	97	77
100%	99%	96%	92%	86%	78%	70%	61%	52%	43%	35%	27%	21%	16%	12%	9%	6%	5%	4%	3%

Intensities in 90° c-plane

0°	2°	4°	6°	8°	10°	12°	14°	16°	18°	20°	22°	24°	26°	28°	30°	32°	34°	36°	38°
2608	2586	2509	2389	2231	2042	1830	1599	1365	1134	915	716	548	414	309	228	169	127	97	77
100%	99%	96%	92%	86%	78%	70%	61%	52%	43%	35%	27%	21%	16%	12%	9%	6%	5%	4%	3%

Intensities in 180° c-plane

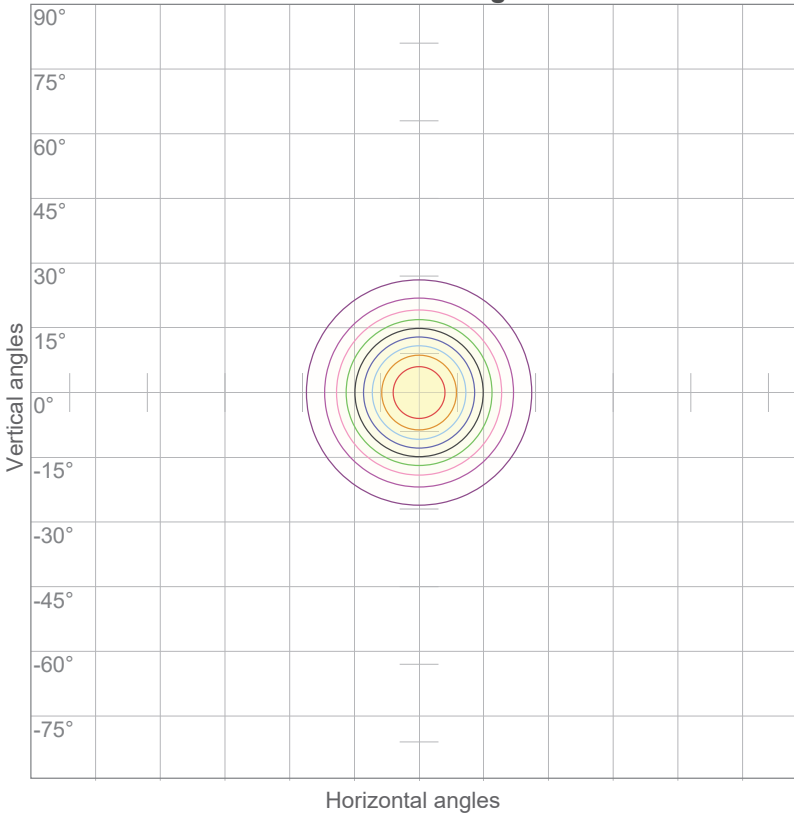
0°	2°	4°	6°	8°	10°	12°	14°	16°	18°	20°	22°	24°	26°	28°	30°	32°	34°	36°	38°
2608	2586	2509	2389	2231	2042	1830	1599	1365	1134	915	716	548	414	309	228	169	127	97	77
100%	99%	96%	92%	86%	78%	70%	61%	52%	43%	35%	27%	21%	16%	12%	9%	6%	5%	4%	3%

Intensities in 270° c-plane

0°	2°	4°	6°	8°	10°	12°	14°	16°	18°	20°	22°	24°	26°	28°	30°	32°	34°	36°	38°
2608	2586	2509	2389	2231	2042	1830	1599	1365	1134	915	716	548	414	309	228	169	127	97	77
100%	99%	96%	92%	86%	78%	70%	61%	52%	43%	35%	27%	21%	16%	12%	9%	6%	5%	4%	3%

Beam angle 50%	Field angle 10%	Cutoff angle 2,5%	Intensity ratio in 120° cone	Intensity ratio in 90° cone
33°	58.3°	79.4°	95.9%	91.5%

ISO candela diagram

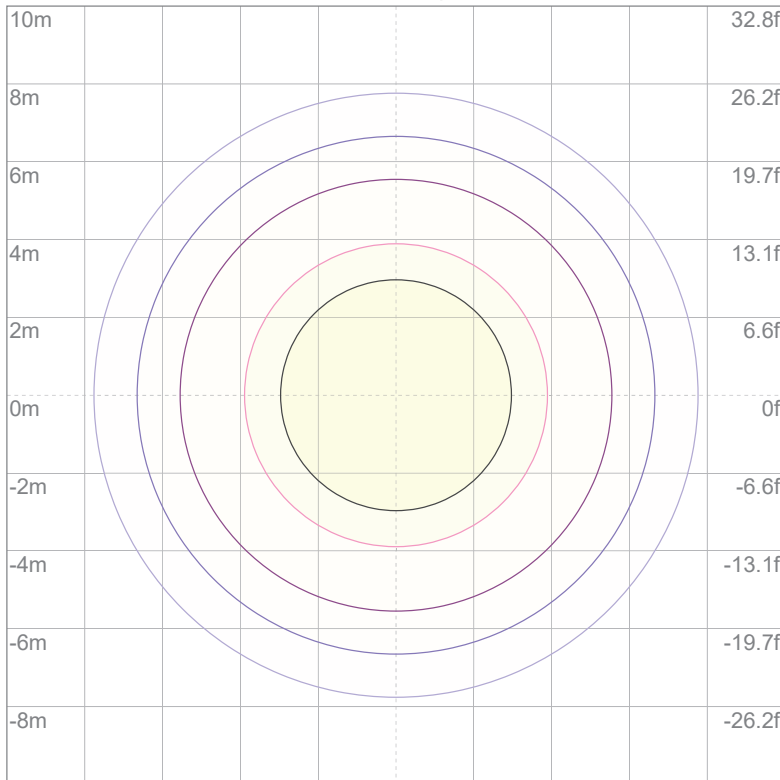


10%	261 cd
20%	522 cd
30%	782 cd
40%	1043 cd
50%	1304 cd
60%	1565 cd
70%	1825 cd
80%	2086 cd
90%	2347 cd

Conditions:

Number of c-planes: 16
Candela at center: 2608 cd

ISO lux diagram



Mounting height: 10 meters (33 feet)

3%	0.782 lx
5%	1.30 lx
10%	2.61 lx
30%	7.82 lx
50%	13.0 lx

Conditions:

Number of c-planes: 16
Lux at center: 26.1 lx

Lux distribution on a surface when lamp is mounted at 10 meters from the surface.