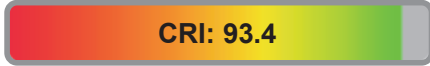


Light efficiency:



Light quality:



Color temperature:



Output: 1066 lm

Peak: 4588 cd

Power: 18.5 W

PF: 0.90



Product name:

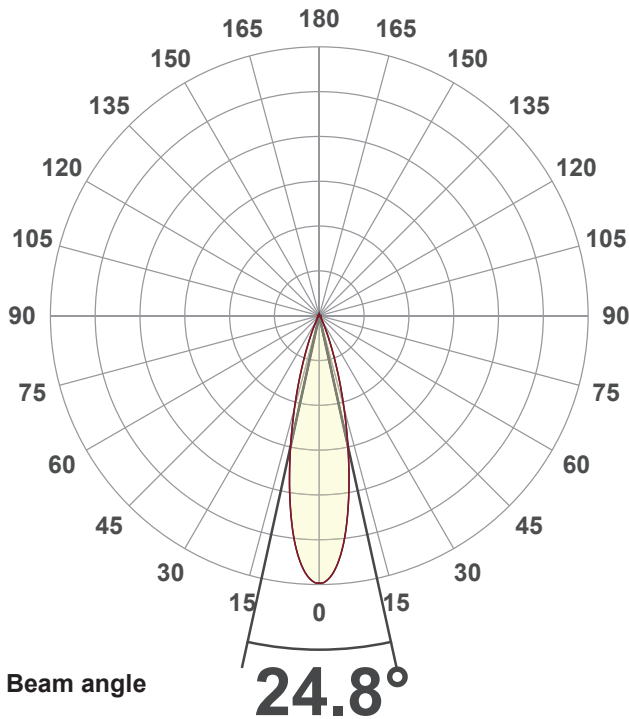
SORAA VIVID PAR30S

Item number:

SP30SW-18-25D-927-03-S3

Date and time:

5/3/2021 2:57:39 PM



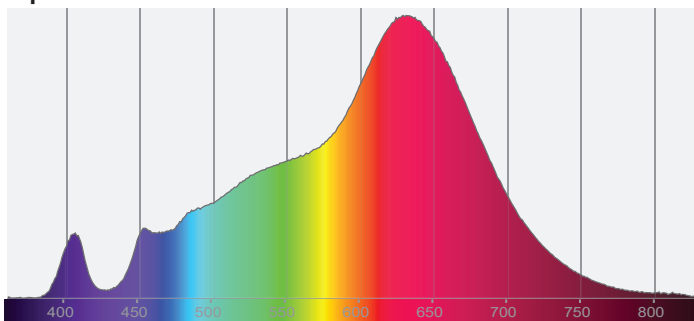
Beam angle

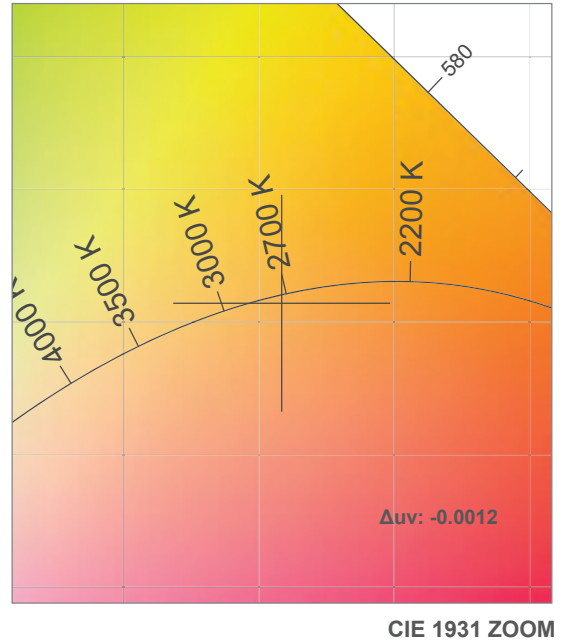
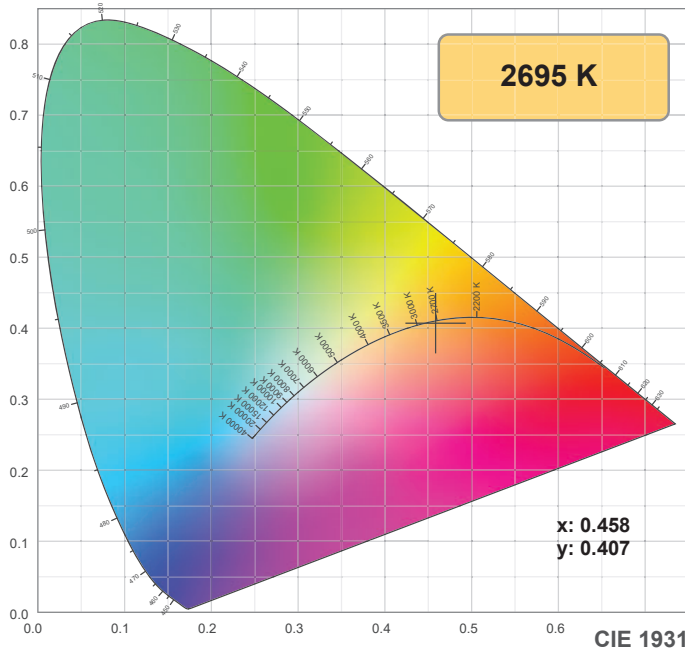
24.8°



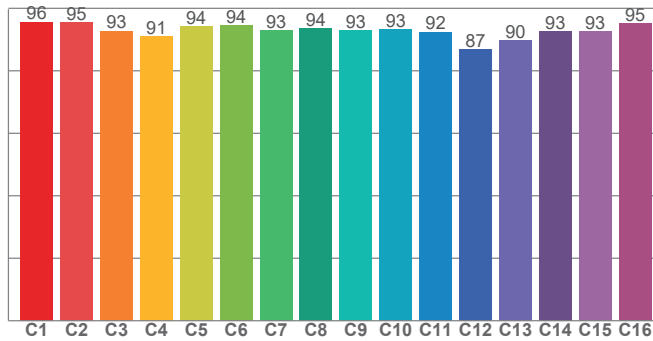
CIE 1931
x: 0.458
y: 0.407

Spectra

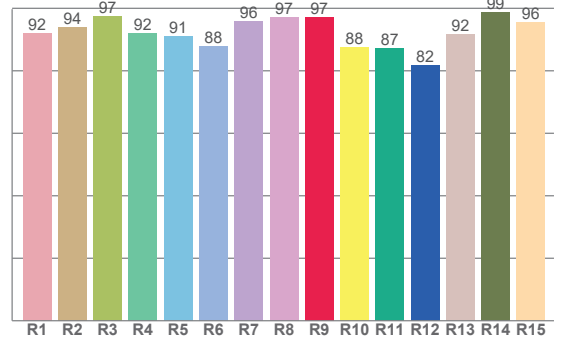




TM30: 93.1



CRI: 93.4 (R1-R8)



CRI R values, only R1-R8 are used to calculate final CRI value

R1	R2	R3	R4	R5	R6	R7	R8	R9	R10	R11	R12	R13	R14	R15
92.2	93.8	97.4	92.0	91.0	87.8	95.9	97.2	97.3	87.6	87.1	81.9	91.6	98.7	95.6

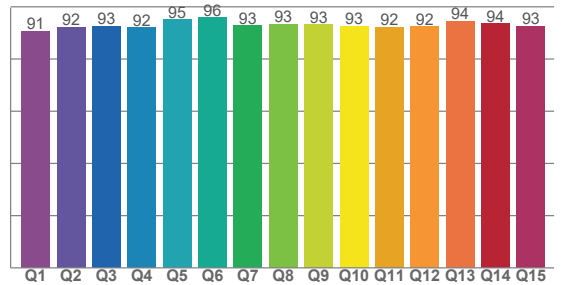
TM30 C values, 16 binned values out of total of 99 C values

C1	C2	C3	C4	C5	C6	C7	C8	C9	C10	C11	C12	C13	C14	C15	C16
95.6	95.5	92.8	91.1	94.3	94.5	92.8	93.6	93.0	93.2	92.4	86.9	89.7	92.7	92.7	95.3

CQS Q values

Q1	Q2	Q3	Q4	Q5	Q6	Q7	Q8	Q9	Q10	Q11	Q12	Q13	Q14	Q15
90.7	92.2	92.6	92.1	95.2	95.9	92.9	93.4	93.2	92.7	92.2	92.4	94.5	93.6	92.6

CQS: 92.9



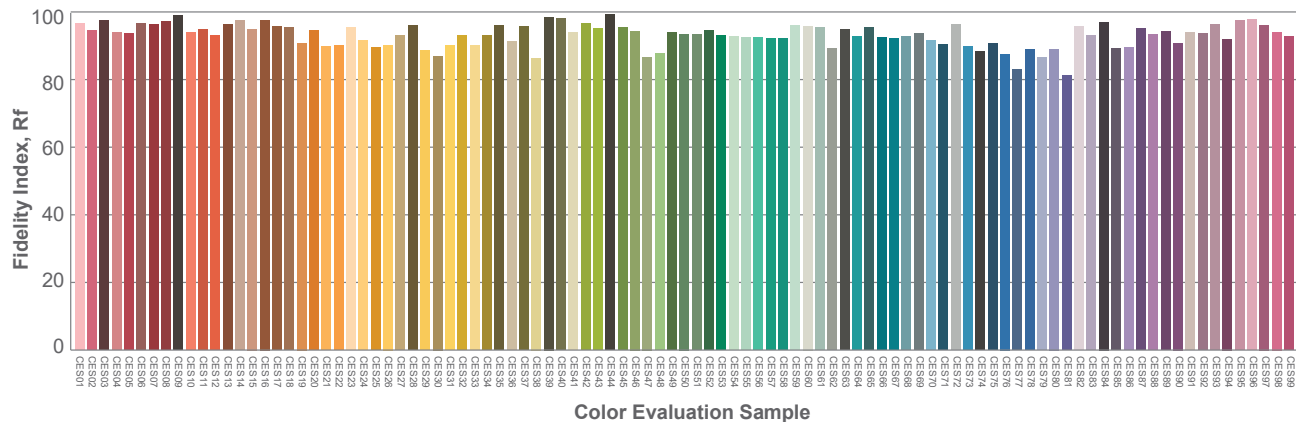
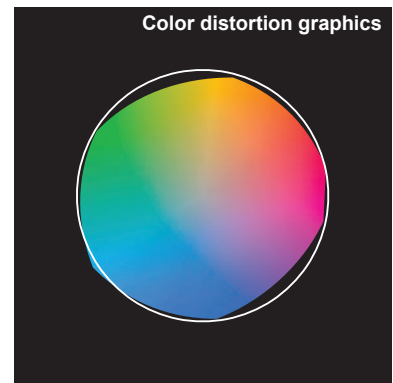
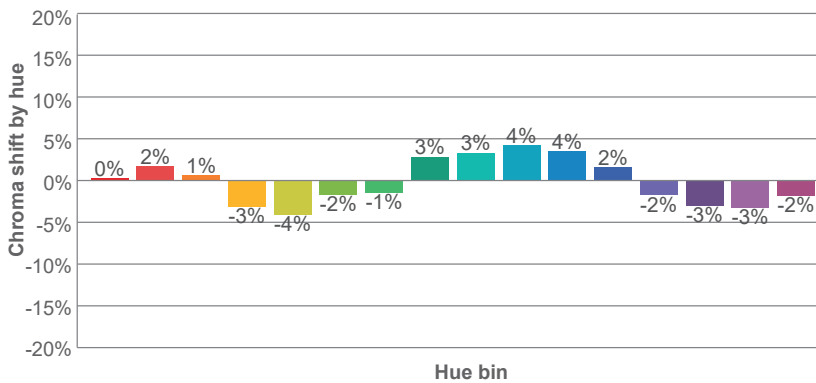
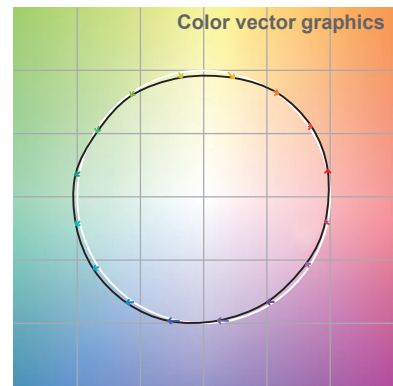
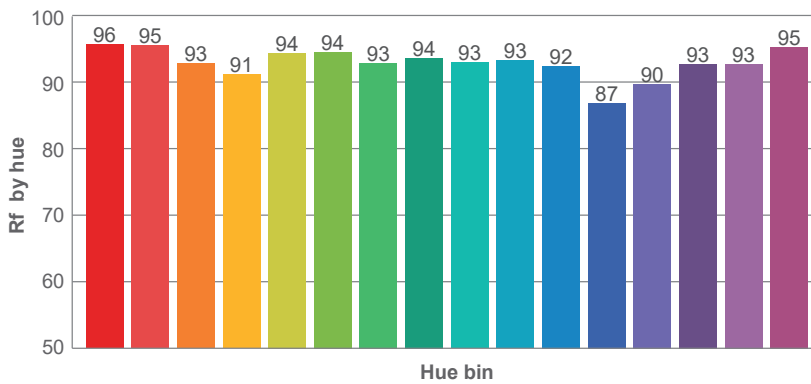
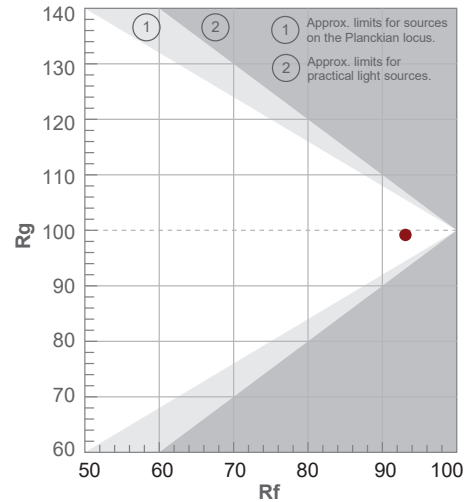
Color parameters

Color temperature	Color rendering index	Red component	Color fidelity	Color gamut	Color quality scale	Color coordinate cie 1931	Color coordinate cie 1931	Color coordinate	Color coordinate	Color deviation from black body
CCT	CRI	CRI R9	TM30 Rf	TM30 Rg	CQS	x	y	u	v	Δuv
2695 K	93.4	97.3	93.1	99.2	92.9	0.458	0.407	0.263	0.351	-0.0012

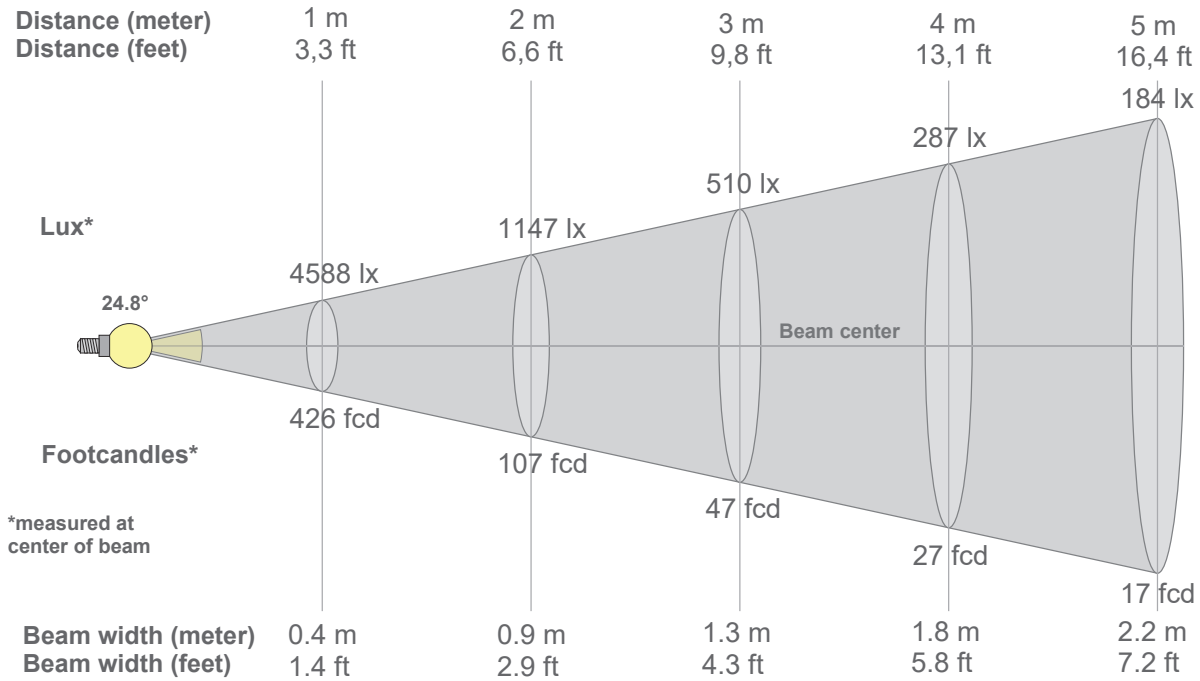
Rf 93.1
Fidelity index Rf

Rg 99.2
Gammut index Rg

Hue Bin	R _f	Graphic shifts (%)	
		Chroma	Hue
1	96	0%	2%
2	95	2%	-1%
3	93	1%	-4%
4	91	-3%	-5%
5	94	-4%	-1%
6	94	-2%	3%
7	93	-1%	4%
8	94	3%	3%
9	93	3%	2%
10	93	4%	-1%
11	92	4%	-4%
12	87	2%	-8%
13	90	-2%	-8%
14	93	-3%	-5%
15	93	-3%	2%
16	95	-2%	-1%



Beam details



Beam intensities from 1-20m

1m	2m	3m	4m	5m	6m	7m	8m	9m	10m	11m	12m	13m	14m	15m	16m	17m	18m	19m	20m
3.3ft	6.6ft	9.8ft	13.1ft	16.4ft	19.7ft	23ft	26.2ft	29.5ft	32.8ft	36.1ft	39.4ft	42.7ft	45.9ft	49.2ft	52.5ft	55.8ft	59.1ft	62.3ft	65.6ft
4588lx	1147lx	510lx	287lx	184lx	127lx	94lx	72lx	57lx	46lx	38lx	32lx	27lx	23lx	20lx	18lx	16lx	14lx	13lx	11lx
426.2fcd	106.6fcd	47.4fcd	26.6fcd	17fcd	11.8fcd	8.7fcd	6.7fcd	5.3fcd	4.3fcd	3.5fcd	3fcd	2.5fcd	2.2fcd	1.9fcd	1.7fcd	1.5fcd	1.3fcd	1.2fcd	1.1fcd

Intensities in 0° c-plane

0°	2°	4°	6°	8°	10°	12°	14°	16°	18°	20°	22°	24°	26°	28°	30°	32°	34°	36°	38°
4588	4520	4301	3947	3476	2941	2397	1884	1424	1032	715	479	317	207	142	104	80	65	57	53
100%	99%	94%	86%	76%	64%	52%	41%	31%	22%	16%	10%	7%	5%	3%	2%	2%	1%	1%	1%

Intensities in 90° c-plane

0°	2°	4°	6°	8°	10°	12°	14°	16°	18°	20°	22°	24°	26°	28°	30°	32°	34°	36°	38°
4588	4520	4301	3947	3476	2941	2397	1884	1424	1032	715	479	317	207	142	104	80	65	57	53
100%	99%	94%	86%	76%	64%	52%	41%	31%	22%	16%	10%	7%	5%	3%	2%	2%	1%	1%	1%

Intensities in 180° c-plane

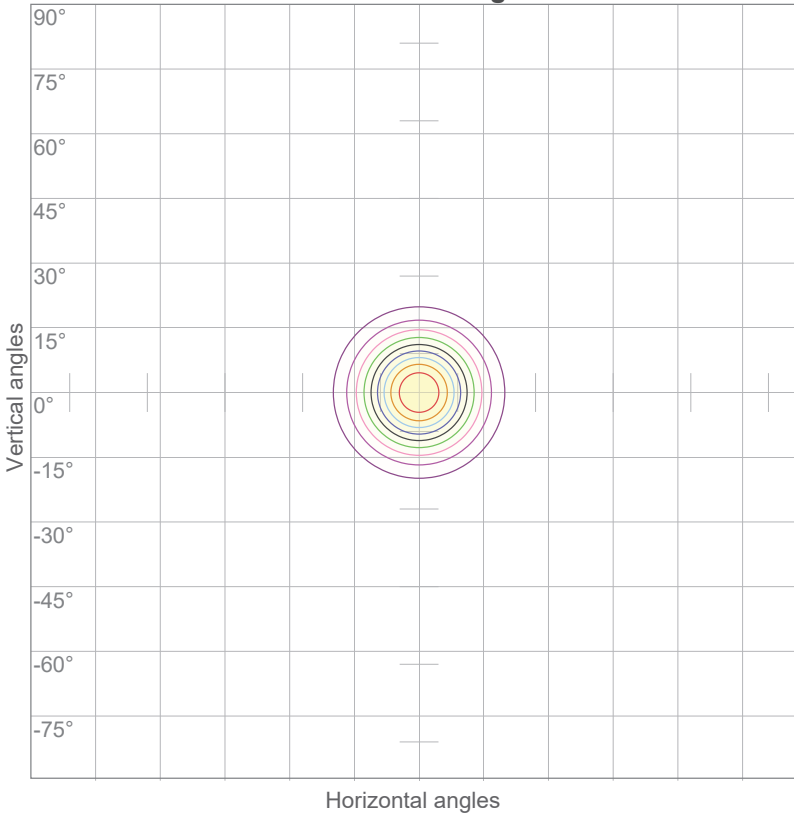
0°	2°	4°	6°	8°	10°	12°	14°	16°	18°	20°	22°	24°	26°	28°	30°	32°	34°	36°	38°
4588	4520	4301	3947	3476	2941	2397	1884	1424	1032	715	479	317	207	142	104	80	65	57	53
100%	99%	94%	86%	76%	64%	52%	41%	31%	22%	16%	10%	7%	5%	3%	2%	2%	1%	1%	1%

Intensities in 270° c-plane

0°	2°	4°	6°	8°	10°	12°	14°	16°	18°	20°	22°	24°	26°	28°	30°	32°	34°	36°	38°
4588	4520	4301	3947	3476	2941	2397	1884	1424	1032	715	479	317	207	142	104	80	65	57	53
100%	99%	94%	86%	76%	64%	52%	41%	31%	22%	16%	10%	7%	5%	3%	2%	2%	1%	1%	1%

Beam angle 50%	Field angle 10%	Cutoff angle 2,5%	Intensity ratio in 120° cone	Intensity ratio in 90° cone
24.8°	44.4°	58.8°	97.1%	93.4%

ISO candela diagram

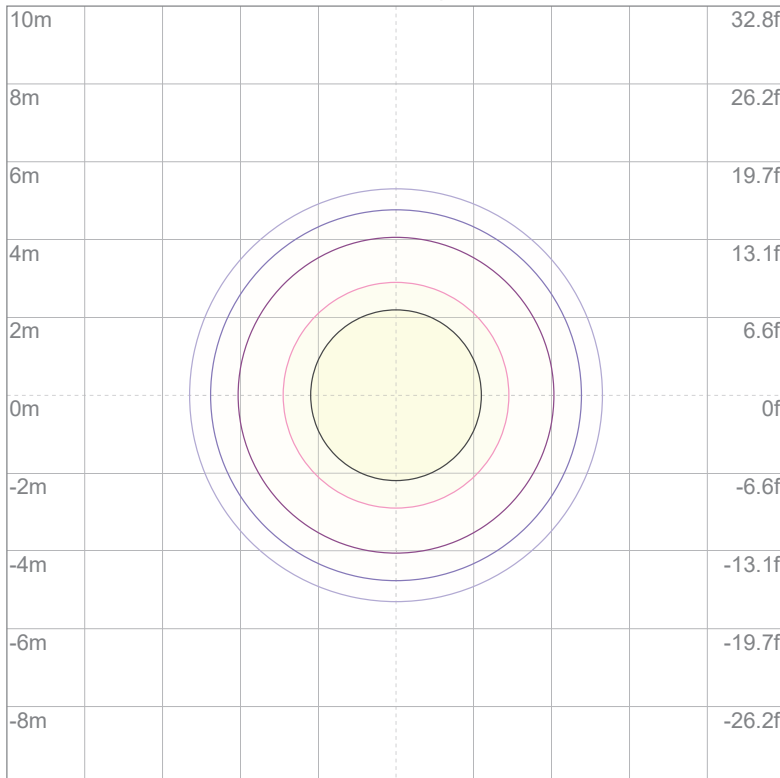


10%	459 cd
20%	918 cd
30%	1376 cd
40%	1835 cd
50%	2294 cd
60%	2753 cd
70%	3211 cd
80%	3670 cd
90%	4129 cd

Conditions:

Number of c-planes: 16
Candela at center: 4588 cd

ISO lux diagram



3%	1.38 lx
5%	2.29 lx
10%	4.59 lx
30%	13.8 lx
50%	22.9 lx

Conditions:

Number of c-planes: 16
Lux at center: 45.9 lx

Lux distribution on a surface when lamp is mounted at 10 meters from the surface.